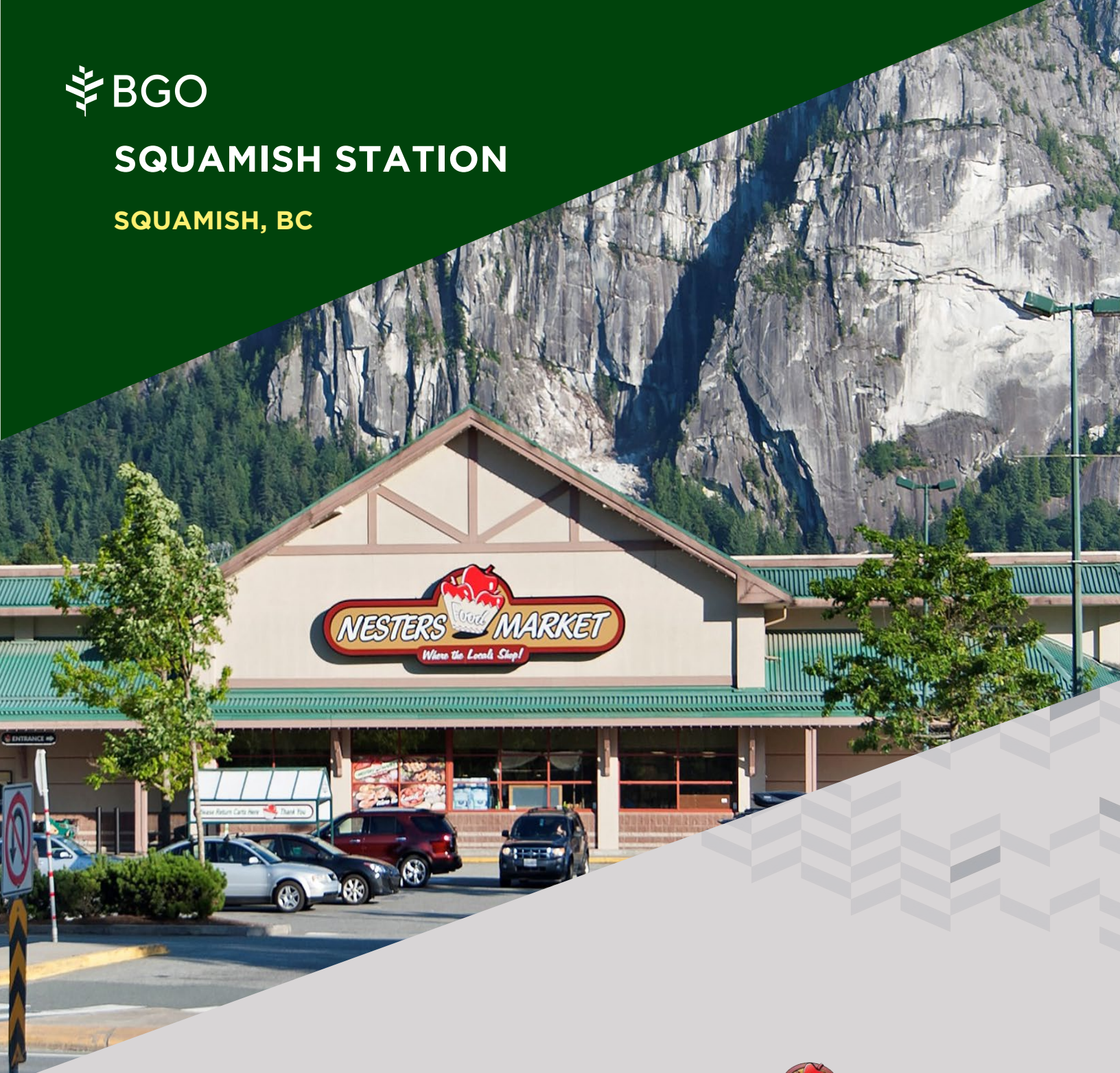




# SQUAMISH STATION

SQUAMISH, BC



**Christina Hall**

Director, Leasing

M: 604.828.8023

E: christina.hall@bgo.com



[bgo.com](http://bgo.com)

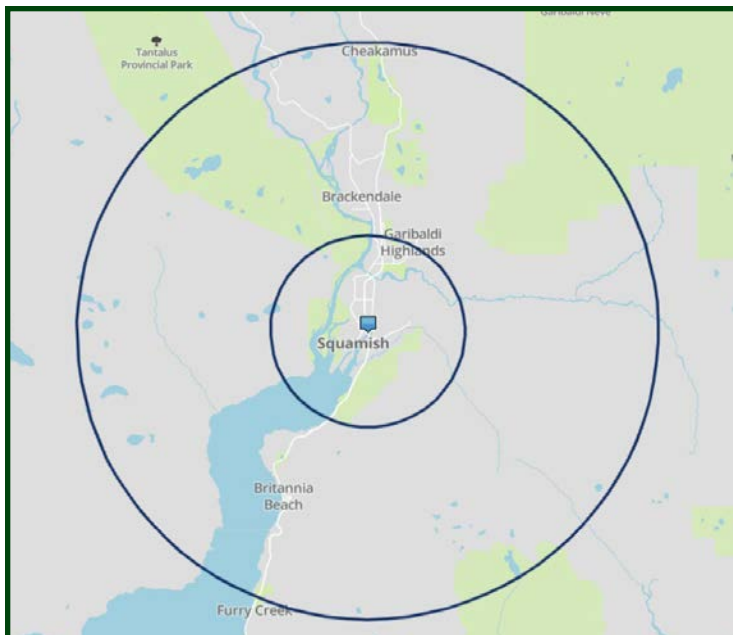


# SQUAMISH STATION SQUAMISH, BC

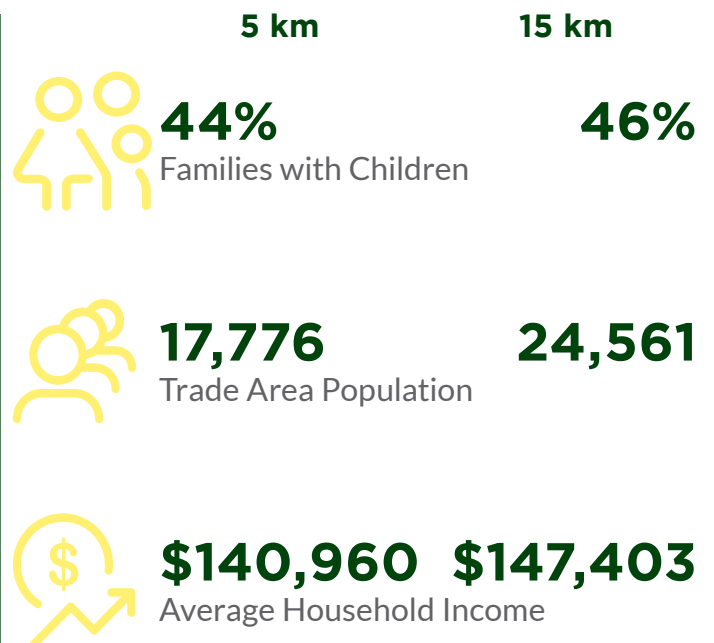
Squamish Station is the dominant open retail centre on the Sea to Sky Highway from Vancouver to Whistler in the Town of Squamish. Trade area population is approximately 23,000 not including the thousands of visitors who frequent the outdoor recreational areas located within the Squamish area and those who pass through Squamish on their way to Whistler. Squamish is fast becoming a bedroom community to Vancouver.



## TRADE AREA MAP



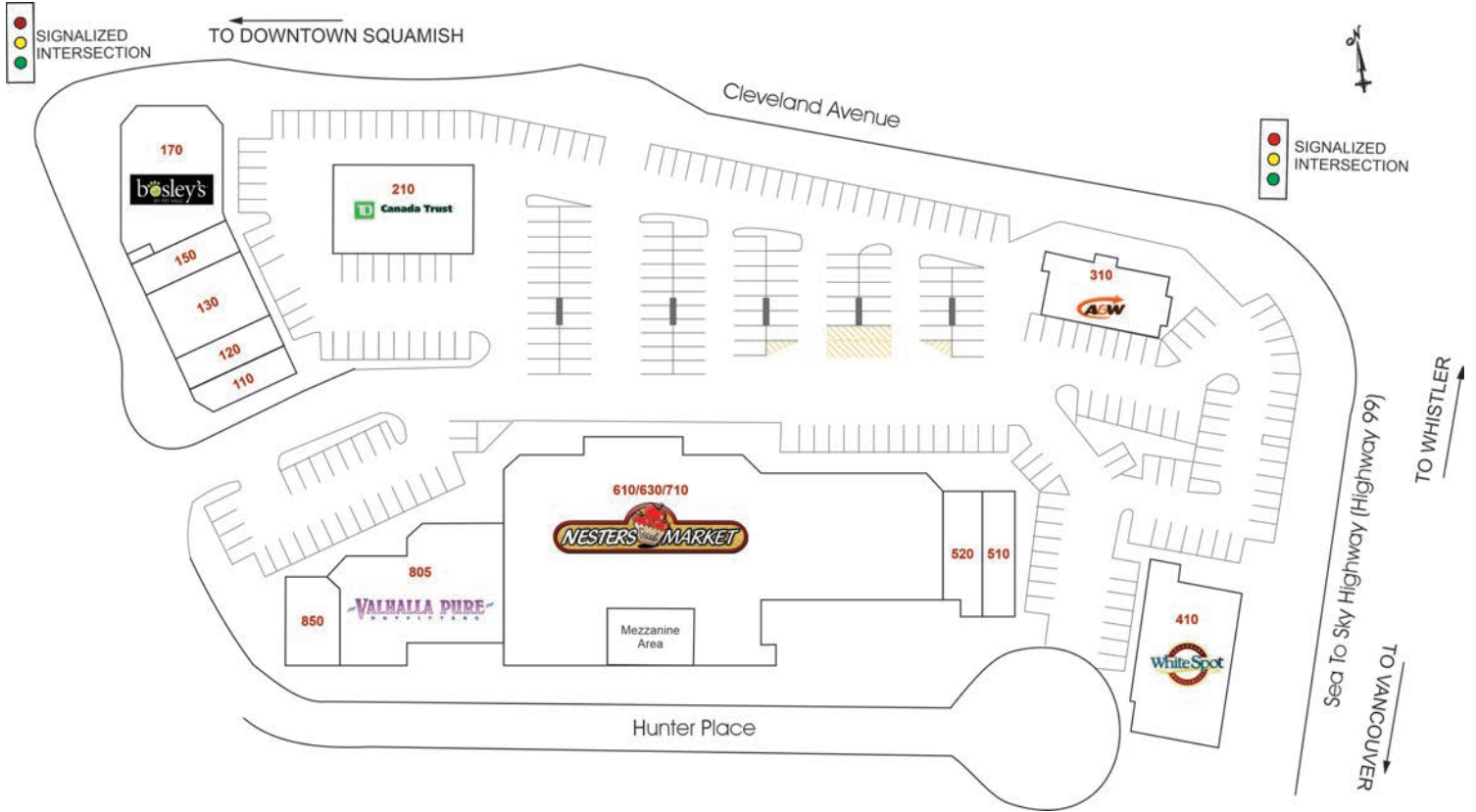
## DEMOGRAPHICS



The information contained herein has been obtained from sources deemed to be reliable but does not form part of any future contract and is subject to independent verification by the reader. The property is subject to prior letting, withdrawal from the market and change without notice.

# SQUAMISH STATION SQUAMISH, BC

## SITE PLAN



## TENANT DIRECTORY

UNIT	TENANT	SQFT	UNIT	TENANT	SQFT
110	Pizza Hut	1,055	510	Starbucks	1,527
120	Samurai Sushi	1,141	520	Tacofino	1,594
130	99 North	2,216	610/630/710	Nesters Market	28,507
150	Engel & Volkers	1,245	805	Valhalla Pure Outfitters	6,437
170	Bosley's by Pet Valu	5,281	850	AC & D Insurance	1,635
210	TD Canada Trust	4,193			
310	A & W	2,600			
410	White Spot	4,500			

## SQUAMISHSTATION.CA/LEASING

The information contained herein has been obtained from sources deemed to be reliable but does not form part of any future contract and is subject to independent verification by the reader. The property is subject to prior letting, withdrawal from the market and change without notice.

## SQUAMISH STATION SQUAMISH, BC



### KEY FACTS

#### GLA

61,931 sf

#### ADDRESS

1200 Hunter Place  
Squamish, BC V0N 3G0

#### MAJOR INTERSECTION

Highway 99 and Cleveland Avenue

#### NUMBER OF STORES

13 stores and services

For further information please contact:

#### Christina Hall

Director, Leasing

M: 604.828.8023

E: [christina.hall@bgo.com](mailto:christina.hall@bgo.com)

#### BentallGreenOak (Canada) Limited Partnership

Suite 1900, 1055 Dunsmuir Street

Four Bentall Centre

P.O. Box 49001

Vancouver, BC V7X 1B1