



PARKWOOD PLACE

PRINCE GEORGE, BC



PATTISON FOOD GROUP
(JANUARY 2024)

HUDSON'S BAY

Andrew Lowther
Vice President, Leasing
T: 604.661.5002
M: 604-644-3193
E: andrew.lowther@bgo.com



bgo.com

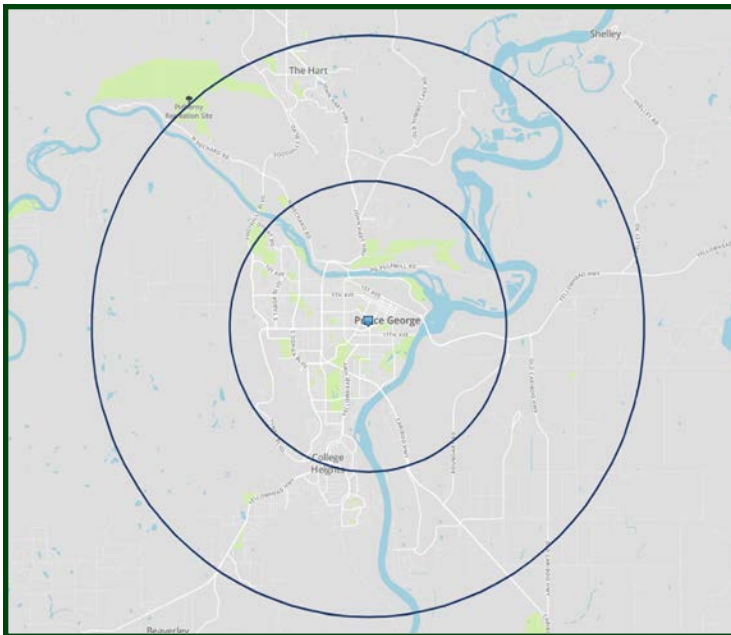
PARKWOOD PLACE PRINCE GEORGE, BC

Parkwood Place is well situated just south of the downtown Prince George commercial trade area. Bounded by major arterial routes of 15th Avenue, Victoria Street and Winnipeg Street, Parkwood Place offers superior access and parking availability with over 1400 stalls. The shopping centre is closely adjacent to residential trade and also offers convenient service to the nearby Prince George Regional Hospital as well as Downtown located hotels. Anchored by The Bay, London Drugs, Staples and Prince George's six screen Cineplex theatre complex, Parkwood Place and its over 30 other shops, services, restaurants and professional offices meets a wide variety of local retail and service needs not easily met elsewhere.

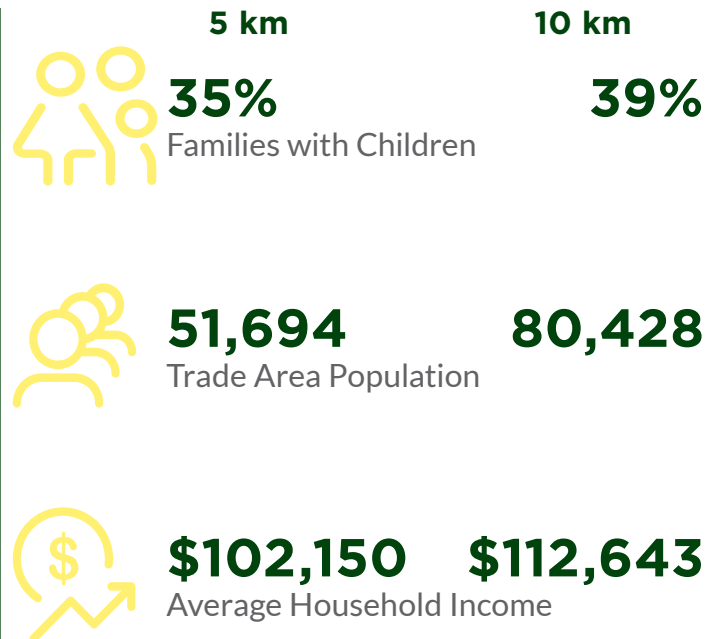
Prince George is the centre of major commercial and industrial activity for all of northern and central BC. Because of its central location, Prince George also acts as the region's transportation hub for road, rail and air routes. As such, Prince George also enjoys regular consumer traffic from a tertiary trade area that numbers to more than 250,000 people.



TRADE AREA MAP



DEMOGRAPHICS



PARKWOOD PLACE PRINCE GEORGE, BC

SITE PLAN



TENANT DIRECTORY

UNIT	TENANT	SQ FT	UNIT	TENANT	SQ FT	UNIT	TENANT	SQ FT
A100	Pattison Food Group <i>(January 2024)</i>	42,137	F133	H&R Block	1,494	H171	Northern Health Authority	2,547
B101	Red Robin Restaurant	6,305	F135	One Stop Barber Shop	960	I173	Northern Health Authority	4,557
C103	Work BC	5,308	F136	Easyfinancial	833	J196	London Drugs	32,428
D104	Booster Juice	1,222	G137	Quizno's	944	K175	Northern Health Authority	3,190
D105	Pizza Hut	4,066	G138	Pita Pit	935	K177	Sunlife Financial	3,872
E107	Telus	1,199	G140	Hudson's Bay Company	111,500	K179	Warehouse One	3,693
E109	Cosmoprof	2,103	G141	Michael's Jewellers	1,273	K187	Easyhome	3,448
E112	Hope For Women	1,157	G143/G144	Prince George Urgent Primary Care Centre	7,815	K201	Sunlife Financial	3,459
E114	Keystone Dental Centre	2,099	G145	Mucho Burrito	1,730	K205	Available	967
E117	TL Nails and Phoenix Stylists	1,610	H146	Available	4,808	K207	Community Living BC	4,052
F121	China Cup	9,557	H149	Northern Health Authority	1,910	L191	Premium Label Outlet & One Boardshop	6,844
F123	National Access Cannabis	2,573	H151	Reflex Supplements	1,090	L193/195	Atmosphere	7,234
F125	All Around Gamerz	1,710	H153	Sticky's Candy	1,353	M172	Famous Players	27,593
F129	Available	5,625	H155	Dr. Phone Fix	930	N198	Dollar Tree	8,032
F130	Second Cup	1,528	H159	Mild Chili Indian Cuisine	2,182	O106	Staples	25,012
F131	Canadian Hearing Care	1,261	H161	Studio Cuts	1,070			
			H163	Northern Health Authority	3,025			

The information contained herein has been obtained from sources deemed to be reliable but does not form part of any future contract and is subject to independent verification by the reader. The property is subject to prior letting, withdrawal from the market and change without notice.



**PARKWOOD PLACE
PRINCE GEORGE, BC**



KEY FACTS

GLA

370,260 sf

ADDRESS

1600 15 Avenue
Prince George, BC V2L 3X3

MAJOR INTERSECTION

Bounded by major arterial routes, Victoria Street, Winnipeg Street, 15th Avenue and Patricia Boulevard

NUMBER OF STORES

50 stores and services

For further information please contact:

Andrew Lowther

Vice President, Leasing

T: 604.661.5002

M: 604-644-3193

E: andrew.lowther@bgo.com

BentallGreenOak (Canada) Limited Partnership

Suite 1900, 1055 Dunsmuir Street

Four Bentall Centre

P.O. Box 49001

Vancouver, BC V7X 1B1